



GENERAL
SYSTEM
BROCHURE

multitubo 

YOUR STATE OF THE ART WATER SYSTEM

At MULTITUBO we understand that plans can change on a building site.

Our system is designed with the installer in mind so we try to provide as much flexibility as possible.

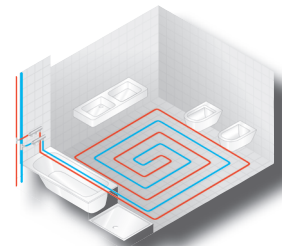
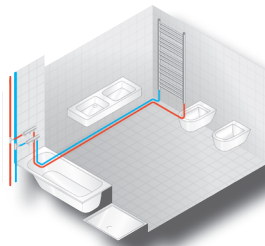
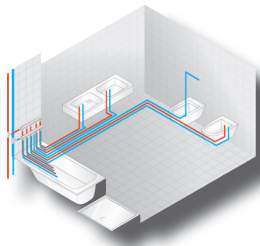
Each of the different types of connection in our product range have their own advantages so they can be combined to create the most efficient system for our customers' needs.

Our knowledge and system flexibility has been trusted since the company was founded in 2004 and today you can find MULTITUBO systems available in more than 40 countries worldwide.



DESIGNED FOR A
LIFETIME OF MORE THAN
50
YEARS

A SYSTEM FOR: TAP WATER RADIATOR CONNECTION RADIANT HEATING



THE PIPE

– FLEXIBLE AND SECURE

LOW THERMAL EXPANSION

- Linear expansion similar to copper pipe
- Lower thermal activity means lower stress in long term usage for the pipe
- Less requirements for clipping the pipe during installation

FORMSTABLE

- Once the pipe is bent it remains in its form
- No complex fixing required
- Able to be installed in low ambient temperatures without preheating the pipe

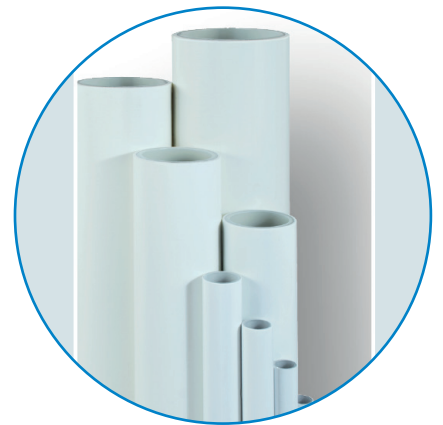
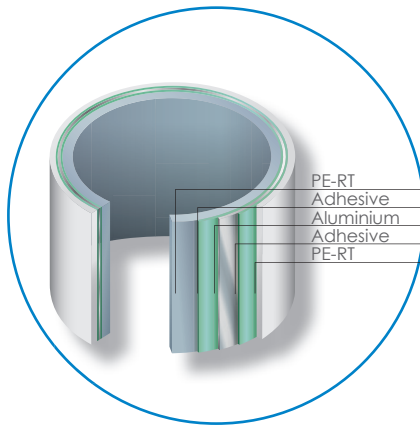
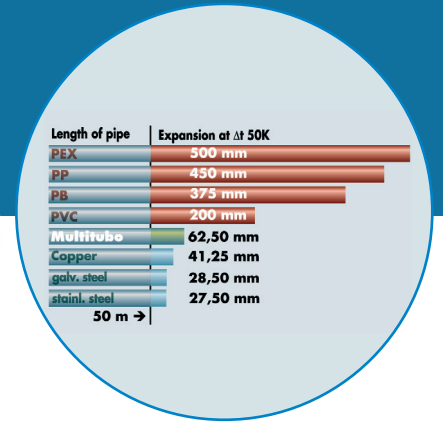
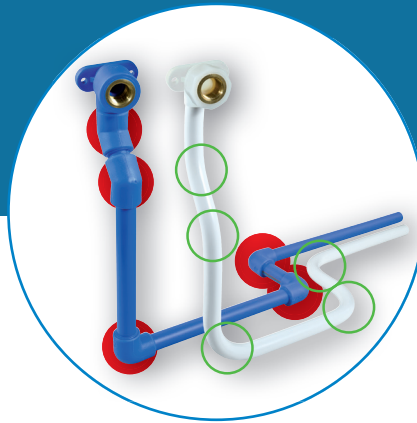
FEWER FITTINGS

As the formstable pipe can be easily bent and retain its shape without additional fixings, the total number of fittings and fixtures on any project will be reduced. This means that the system can be installed efficiently while lowering project costs.



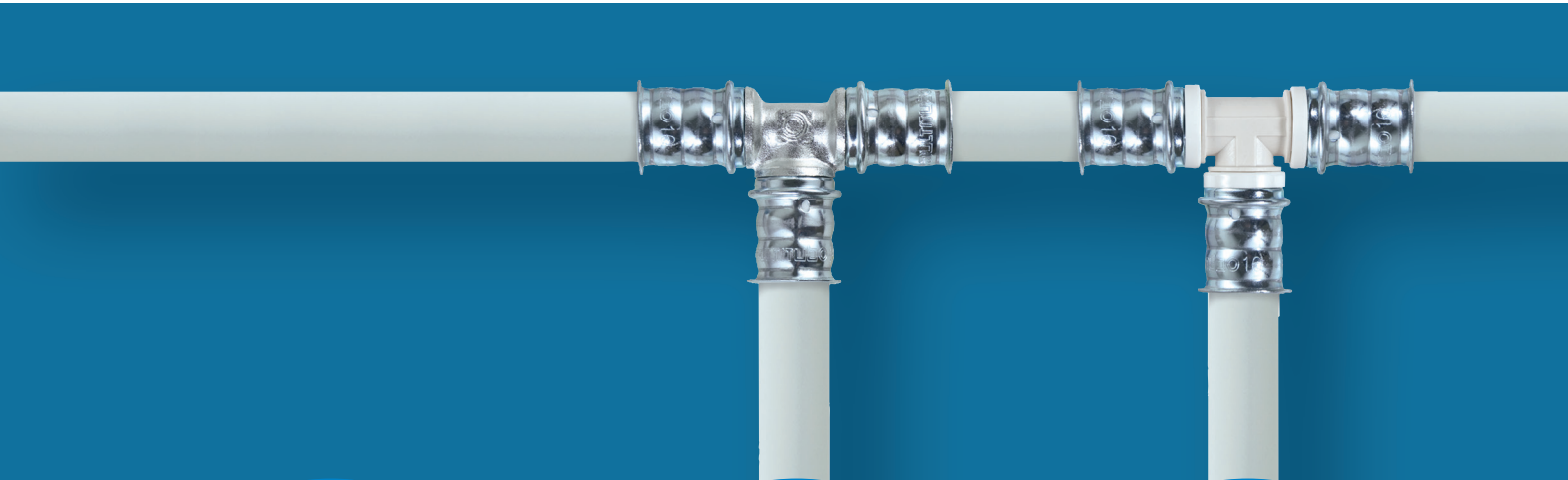
MORE THAN
30
 YEARS
 OF EXPERIENCE

Our Research and Development has been supporting innovation and growth in the multi-layer pipe market for more than 30 years. This means our customers can rely on the quality of our products and the design that delivers them.



ALTERNATIVES

– FULLY COMPATIBLE!



MODULAR PRESS-FITTINGS

63 / 75 / 90 / 110 mm

For risers and supply pipes up to 110mm, the modular Press Fitting is ideal. By simply fixing the pre-pressed pipe sections with gripper clamps the installation can be done simply and quickly on site making installations in riser cupboards, above ceilings and in other hard to access locations easy.

METAL-PRESS-FITTINGS

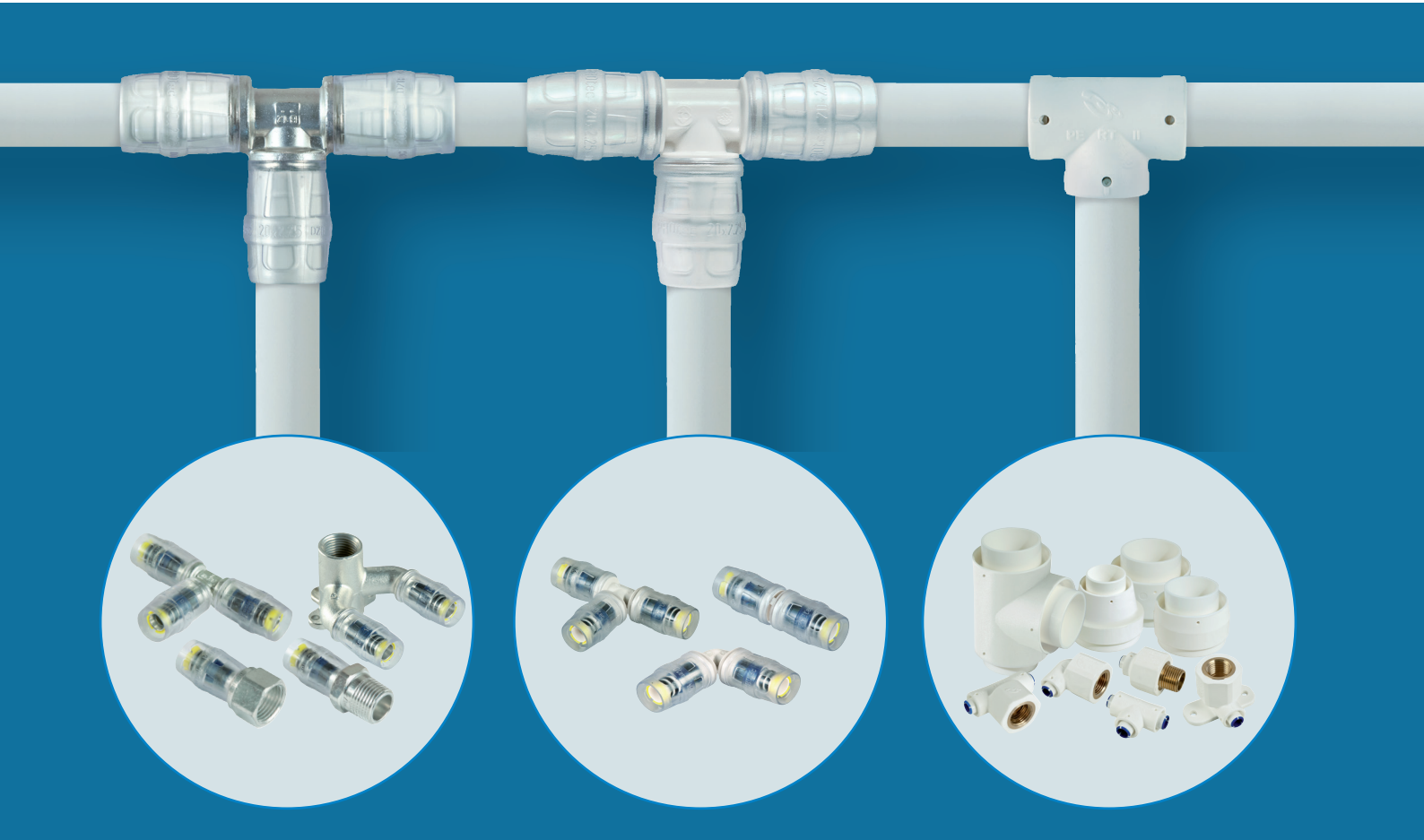
16 / 20 / 25 / 32 / 40 / 50 / 63 / 75 mm

Our most popular connection technology with the widest range of uses.

PPSU-PRESS-FITTINGS

16 / 20 / 25 / 32 / 40 mm

Our high quality PPSU-Press Fittings are a cost-effective alternative to the most commonly used fittings.



METAL-PUSH-FITTING

16 / 20 / 25 / 32 mm

The MULTITUBO system Push-Fitting is our fastest and most effective fitting. No matter if it is a new project or a repair, the strength of the Push-Fitting and the ease of its installation even in narrow spaces means it offers incredible project flexibility.

PPSU-PUSH-FITTING

16 / 20 / 25 mm

Our PPSU-push fittings deliver the same high performance results as our metal push fittings but at a lower cost which makes them a more affordable choice for the most used fittings on your project.

PE-RT-WELDING-FITTINGS

16 / 20 / 25 / 32 / 40 / 50 / 63 / 75 mm

Our aluminium Multilayer pipes can now be welded by using this innovative welding fitting. This fitting combines the advantages of a modern pipe system with traditional connection technology and provides cost savings too.

HIGHEST FLEXIBILITY

All our MULTITUBO system fittings are fully compatible across the range. This means that you can select the most suitable fitting for your project enabling a smooth installation and the opportunity to optimise the installation even while on site.



INNOVATION

YOU CAN RELY ON

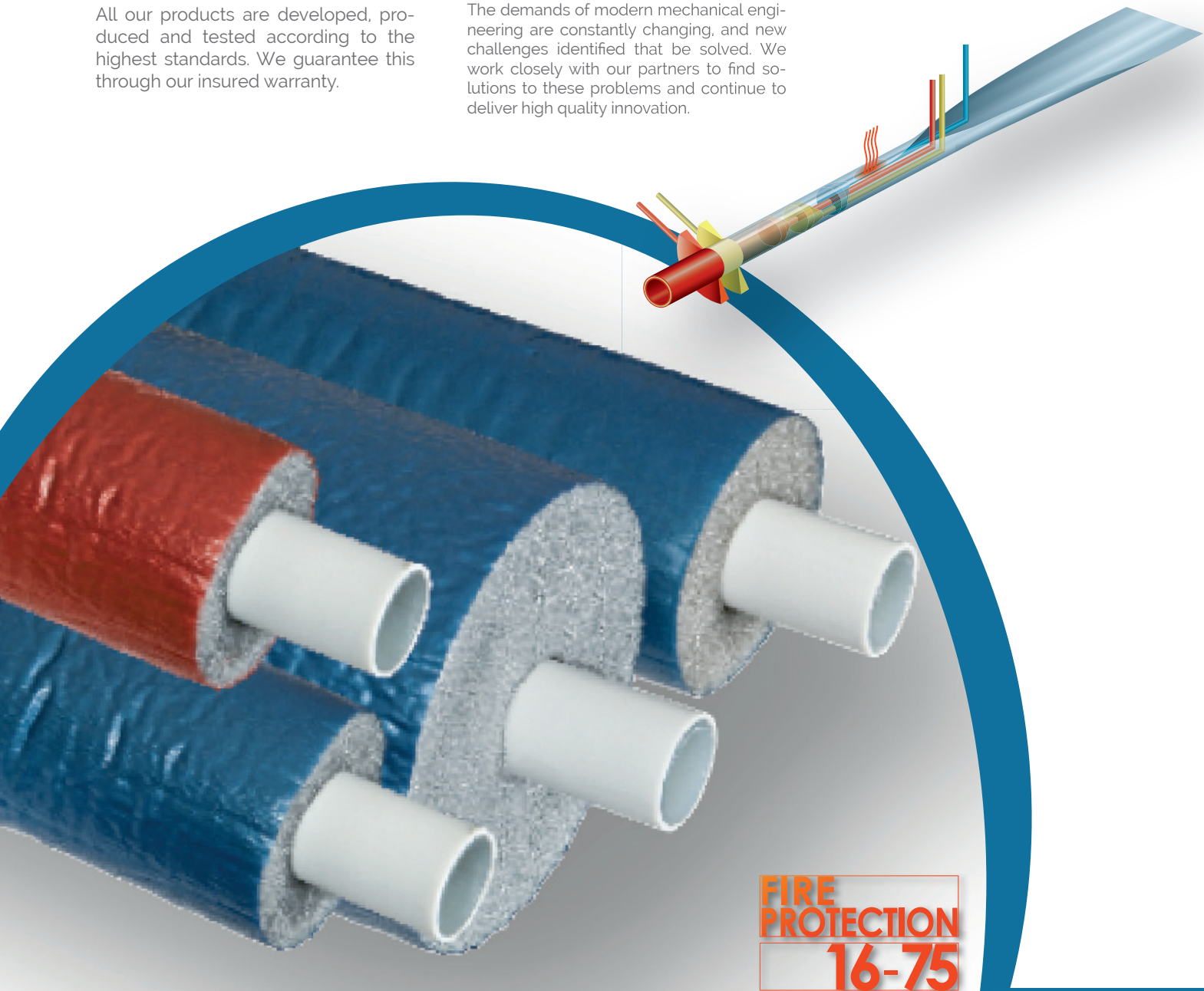
As a innovator in the heating / sanitary sector, MULTITUBO does more than just produce high quality, reliable products. Our aim is to provide our customers with an innovative, easy to install system that meets all safety requirements and is efficient to use. We want to help your project run smoothly so we have adopted important accessories like pre-insulated pipes, developed solutions for tap water applications as well as adding radiant heating and radiator connections to our product-range.

WARRANTY

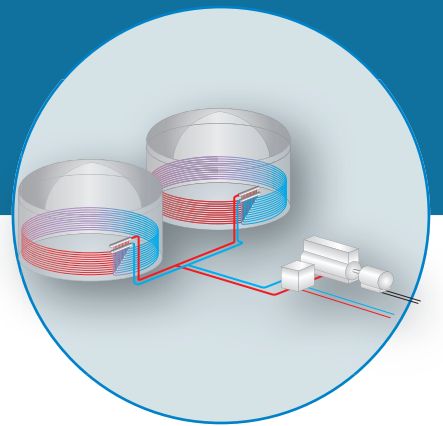
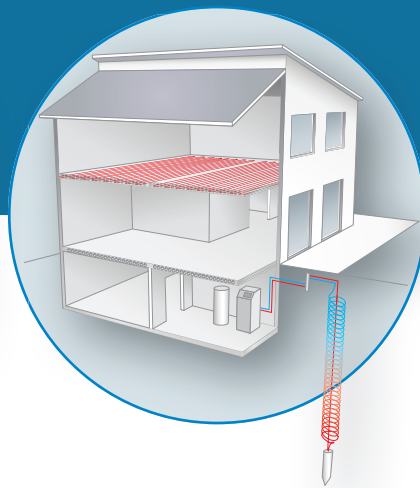
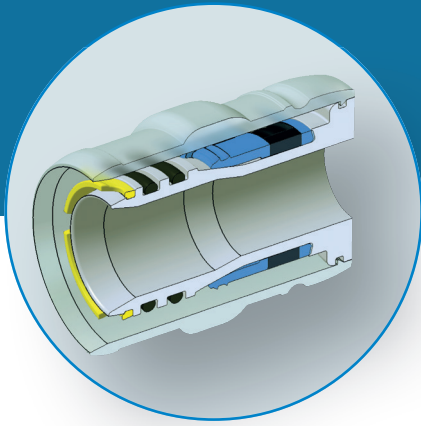
All our products are developed, produced and tested according to the highest standards. We guarantee this through our insured warranty.

INNOVATIONS

The demands of modern mechanical engineering are constantly changing, and new challenges identified that be solved. We work closely with our partners to find solutions to these problems and continue to deliver high quality innovation.



**FIRE
PROTECTION**
16-75



DESIGNS

Our fittings are specifically designed to be as uniform as possible. By keeping our installation processes the same across our fittings this helps installers to avoid mistakes.

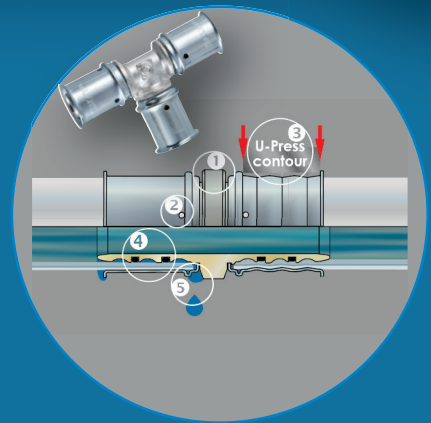
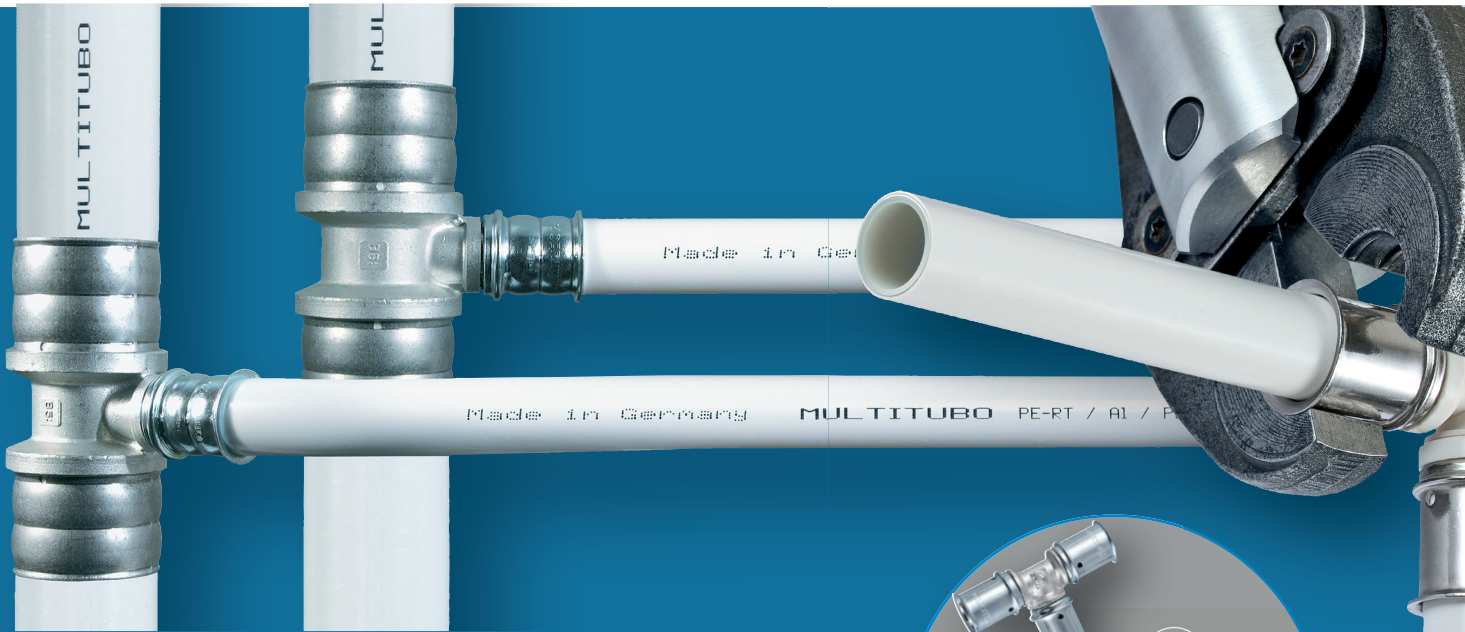
APPROVALS AND CERTIFICATIONS

Our products are tested according to national and international standards. Approved and certified by international relevant authorities, we work closely with all national and international institutes to retain our certification.



PRESS-FITTINGS

– ROBUST CONNECTED



- Wide range of sizes:
From 16 mm to 110 mm
- Robust:
Installed in countless projects
- **Economic and safe:**
Easy handling,
secure connection!

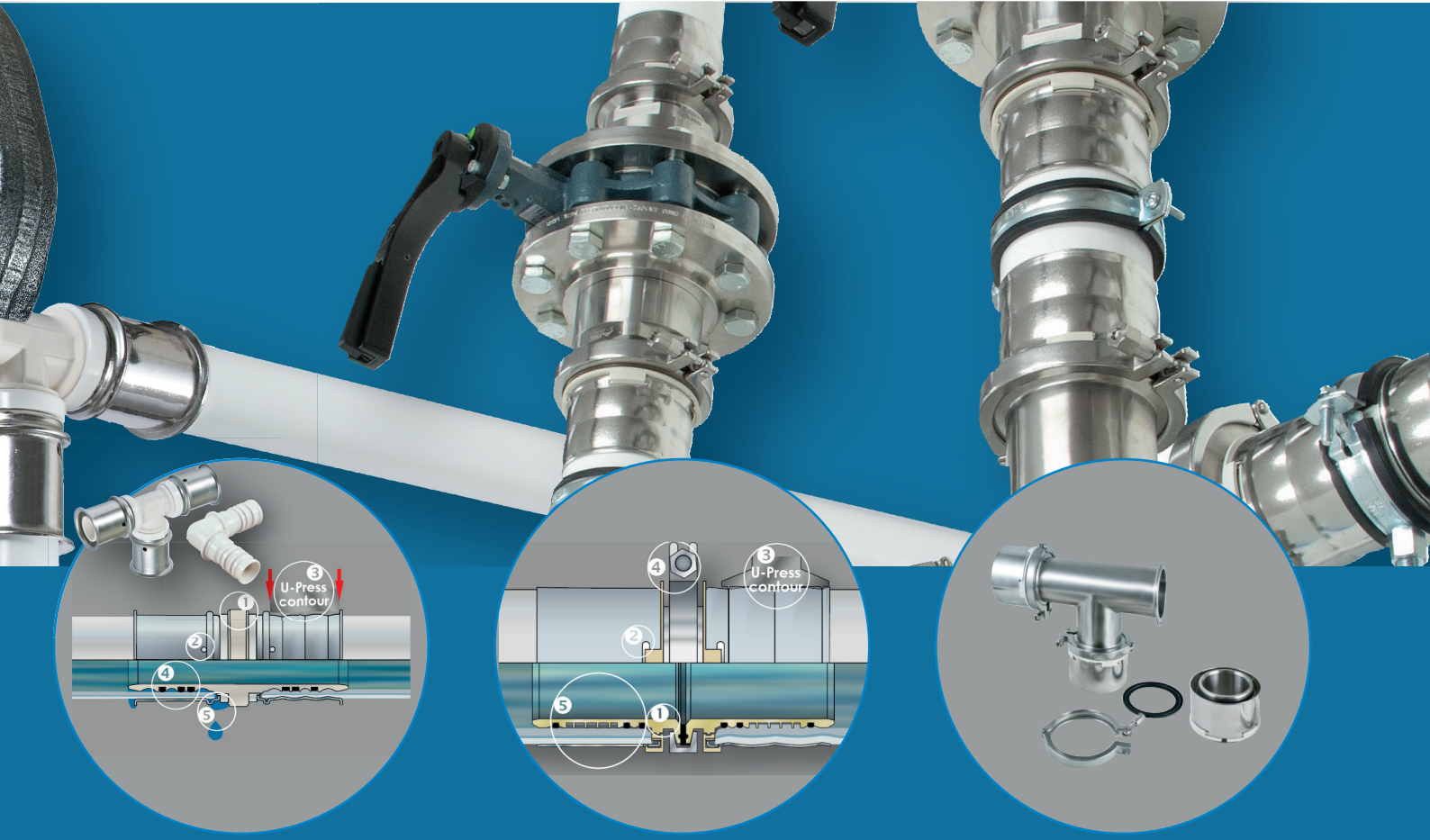
PRESS-FITTINGS

A broad scope of plumbing project demands can be met by our range of fittings which are available in 16 – 75mm. The PPSU-Press Fitting completes the product range by providing a lower cost solution.

Easy pre-assembly at the workbench for larger sizes (63 - 110mm) enables simple and fast installation on site. A more comfortable way to do overhead installations such as 90 and 110mm connections.

METAL-PRESS-FITTING

- **Brass** fitting body
- Stainless Steel sleeves with **Inspection-window**
- **Double Press Jaw guides**
- **U-Press contour**
- **2 O-Rings** for permanent tightness
- **Additional test safety**



PPSU-PRESS-FITTINGS

- Fitting body **made of PPSU**
- Stainless Steel sleeves with **Inspection-window**
- **Double Press Jaw guides**
- **U-Press contour**
- **3 O-Rings** for permanent tightness
- **Additional test safety**

MODULAR 90/110

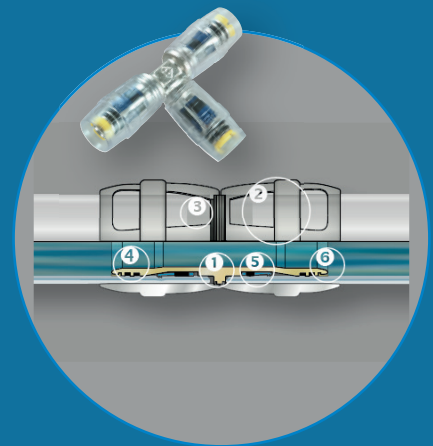
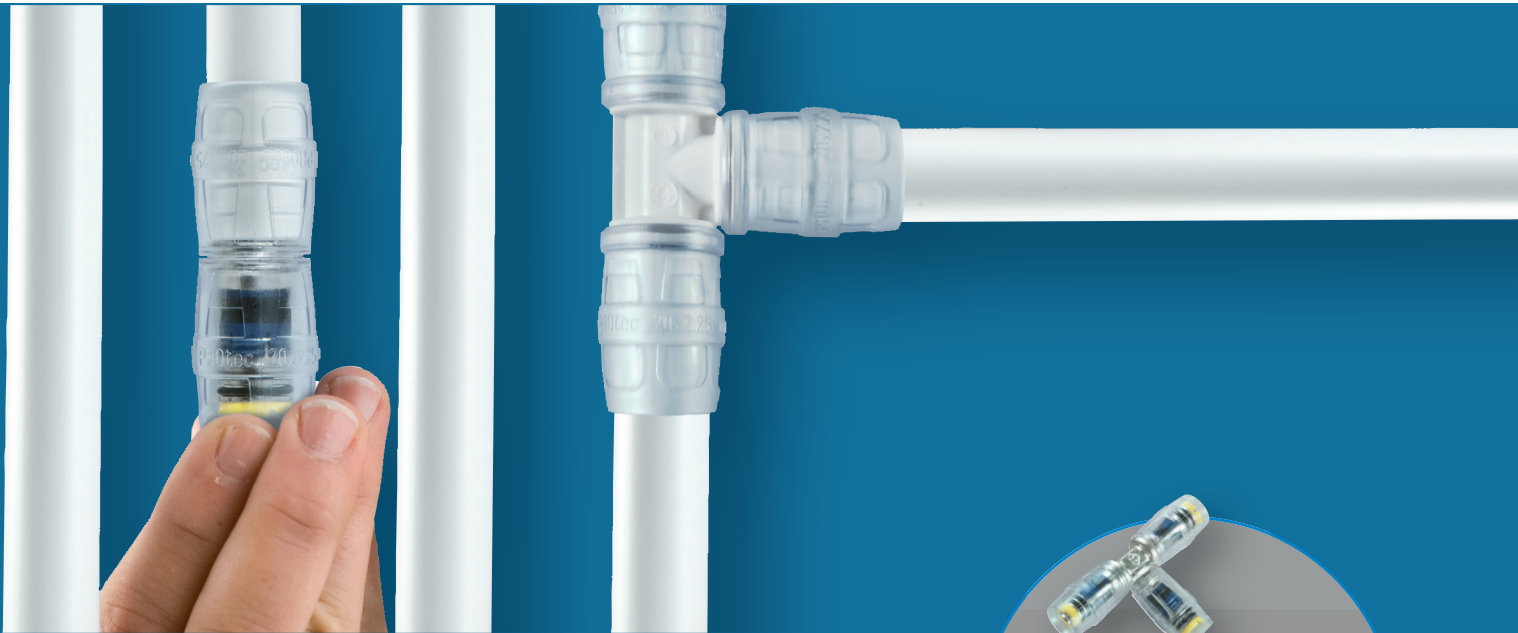
- Adapter for the press-connection to the pipe **modularly expandable with angle or T-piece base bodies**
- Stainless Steel sleeves **with Inspection-window**
- **Special profile-geometry** for safe pressings, 3 O-Rings
- **U-Press contour**
- **Pressing at the workbench, connecting on site**
- **Connection by cripper-clamb** and torque, simple and fast
- **Safe to install**, even at height

MODULAR
PRESS-FITTINGS
90 | 110



PUSH-FITTING

– FAST CONNECTED



Saves up to 30% of the total costs resulting from:

- **Fast to install:**
Cut to length, calibrate, push to gether, complete!
- **Quick set-up times**
- **Slim design** for easy insulating
- Range of even **more cost-efficient PPSU-Fittings** available
- **No maintenance of machines, low risk of theft**

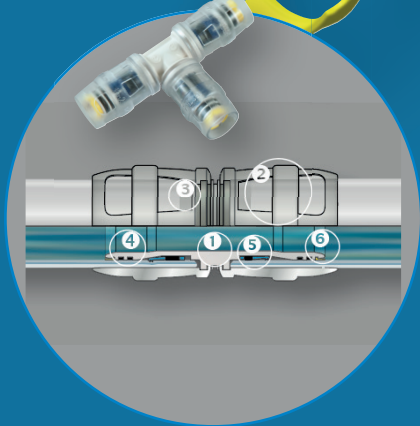
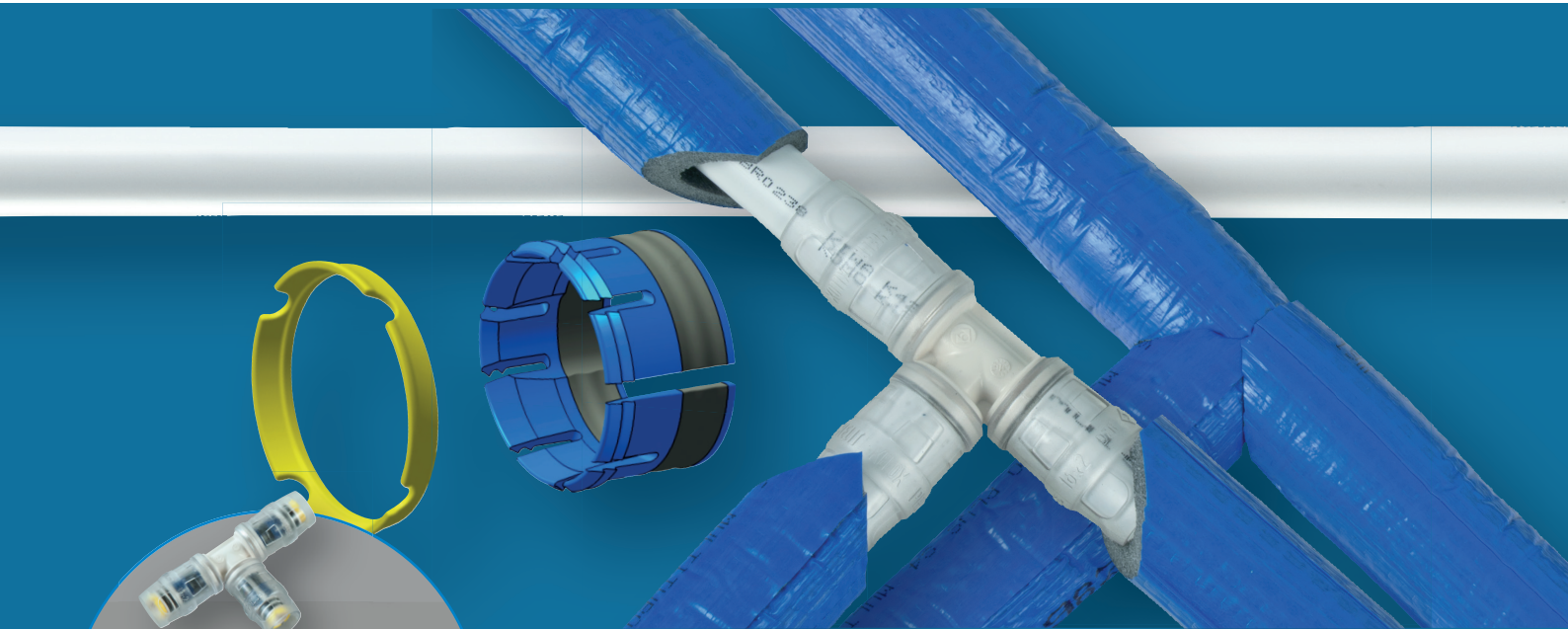
PUSH-FITTINGS

The Push Fitting is the perfect solution for fast installations or when there is limited space available. Projects or repairs can be completed quickly with low set-up time and very little tool usage.

The special secure connection technology of this fitting provides the highest degree of installation reliability: Non calibrated pipes cannot even be pushed into the fittings.

METAL-PUSH-FITTING

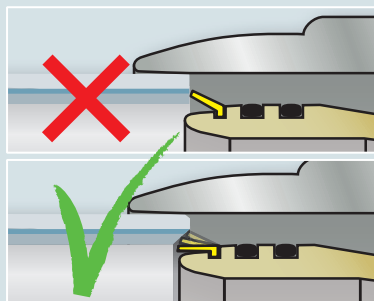
- **Brass** fitting body
- **Grip-Ring** , holds the pipe reliable in place
- **Protector-Ring** , prevents insertion of non-calibrated pipes
- **Transparent Plastic sleeve** : Indicates the correct insertion-depth of the pipe .
- **2 O-Rings**
- Easy to handle **even in narrow spaces**
- **No special tools required**



PPSU-PUSH-FITTING

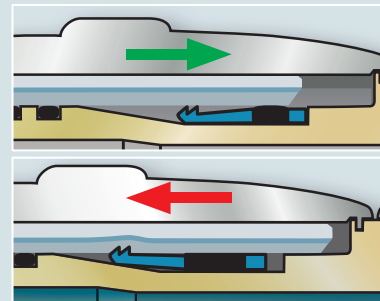
- Fitting body **made of PPSU**
- **Same safety features** as the MULTITUBO system Metal-Push-Fitting
- **Grip-Ring** , holds the pipe reliable in place
- **Protector-Ring** , prevents insertion of non-calibrated pipes
- **Transparent Plastic sleeve** : Indicates the correct insertion-depth of the pipe .
- **Special profile** for permanent hold
- **2 O-Rings**

THE PROTECTOR-RING

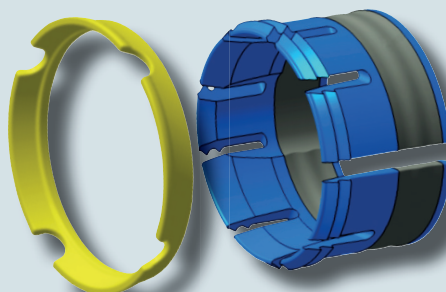


The Protector Ring prevents insertion of non-calibrated pipes.

THE GRIP-RING

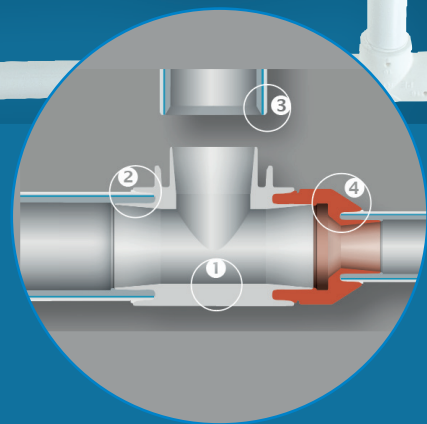


When the calibrated pipe is inserted the Grip Ring gives way. The Grip-Ring is embedded into the connection.



WELDING-FITTINGS

– HOMOGENOUS CONNECTION



- **The cost-saving solution** for Dim. 16mm to 75mm
- **The first welding solution technology for Al-Multilayer pipes**
- **Fewer fittings** required than with traditional weldable pipe systems
- **Up to 90% weight reduction**, compared with Metal-Press-Fittings
- **Homogenous, hermetic connection**
- **Welded inside and outside**, for highest safety

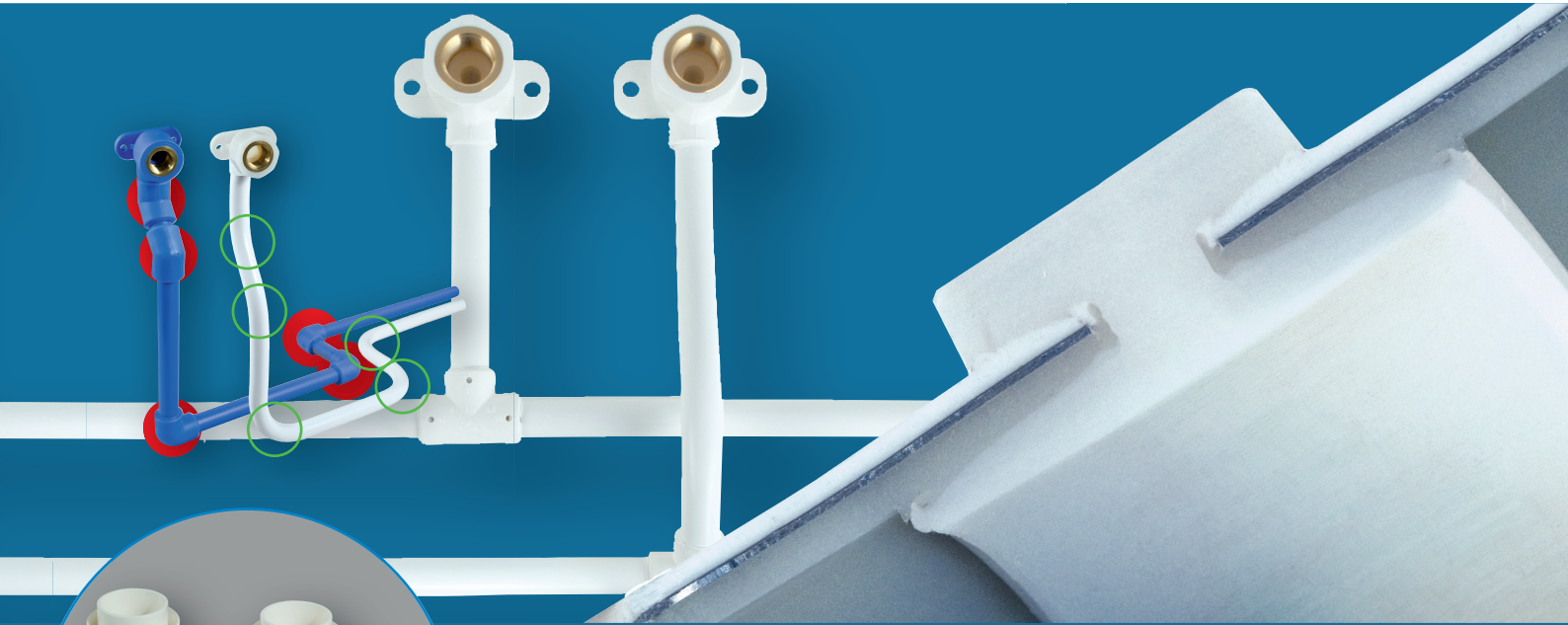
MULTITUBO systems welding fittings combine the advantages of Alu-Multilayer pipes with welded connections. Our patented technology enables a homogenous and hermetic connection.

To make this possible we enhanced the traditional welding technology: The MULTITUBO systems pipe is welded from in- and outside. This means the pipe is totally embedded into the fitting.

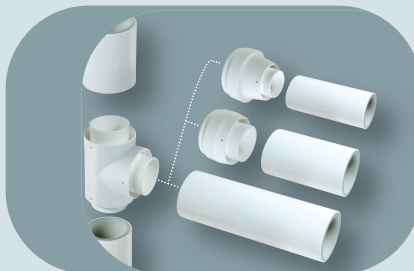
The lightweight PE-RT Fittings are up to 90% lighter than the equivalent Metal-Press-Fittings.

WELDING-FITTINGS

- Fittings made of **PE-RT Type II**
- **Patented connection technology:** Special Profile geometry for perfect flow of the material
- **Threat fittings with inserted brass screw collars**
- Pipe does **not need to be peeled off**
- **Chamfer the pipe , heat-up pipe and fittings simultaneously, join them, done!**
- **No corrosion** thanks to 100% protection to the aluminium layer.
- **Simple pipe dimension transitions** by using reduction-adapters



- **Several welding inserts** can be **connected** to the heating device **simultaneously**
- **Low tool-costs**
- **Highly efficient**





Technical details are subject to change.
Detailed technical information and
assembly instructions are available from
the Technical Manual in the download
section of our website or can be
requested from the following address:

DW Verbundrohr GmbH Langer Rain 38 97437 Hassfurt Germany
Fon +49 (0) 9521-95356-0 Fax +49 (0) 9521-95356-9
E-Mail info@multitubo.eu www.multitubo.eu