

- The cost effective solution for dimensions 16mm up to 75mm
- The first welding connection for Multilayer Composite Pipes
- Up to 90% weight reduction compared to metal press fittings
- Homogenous, material-locking connection
- Welded inside and outside, for the highest degree of safety

Patented Know How
Highest degree of safety due to a especially developed connection geometry

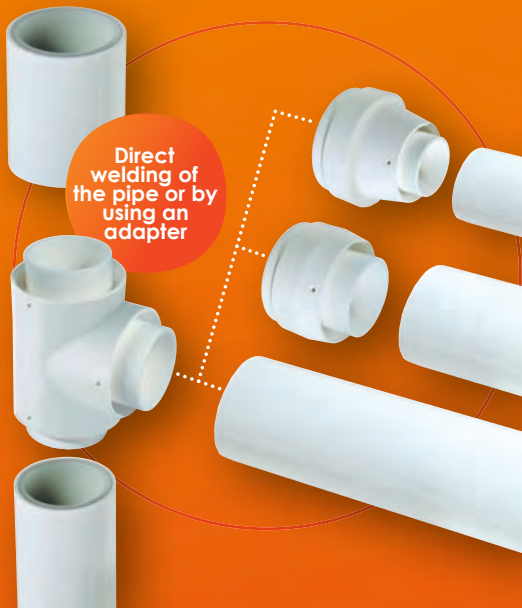
**WELDING
FITTINGS**

16-75

WELDED INSIDE AND OUTSIDE

The welding technology for our multilayer composite pipe provides an optimum of safety. Due to the homogenous and material-locking connection the flowing material fully covers the aluminium edge and the pipe is welded in- and outside.





EVEN MORE FLEXIBLE

A new definition of technology by welding technology from MULTITUBO systems: The Aluminium Multilayer pipe is welded from in- and outside. So the pipe is totally imbedded into the fitting. The patented Welding-profile secures a homogenous, material-locking connection.

Additional the light weight enables a easier handling. Compared to metal press-fittings of the same dimension you have weight-reductions up to 90%.

Our adapter solution for the welding fitting provides even more flexibility for connections. Depending on the demands at the building site the required reductions can be done quick and easily:

Use your new freedom in the installation:

- **Easy working over head** due to low-weight fittings and tools.
- **Highest flexibility in the realisation.**
- **High degree of safety** due to the advantages of Multilayer pipes.



All MULTITUBO systems fittings are fully compatible within the same dimension range!

Welding-Connection MT



Art.-No.:	Type
80000	16 x 1/2" MT
80010	20 x 1/2" MT
80011	20 x 3/4" MT
80020	25 x 3/4" MT
80021	25 x 1" MT
80030	32 x 1" MT
80040	40 x 1 1/4" MT
80050	50 x 1 1/2" MT
80060	63 x 2" MT
80070	75 x 2 1/2" MT

Welding-Connection FT



Art.-No.:	Type
81000	16 x 1/2" FT
81010	20 x 1/2" FT
81011	20 x 3/4" FT
81020	25 x 3/4" FT
81021	25 x 1" FT
81030	32 x 1" FT
81040	40 x 1 1/4" FT
81050	50 x 1 1/2" FT
81060	63 x 2" FT
81070	75 x 2 1/2" FT

Welding-Elbow 90°



Art.-No.:	Type
83000	16 x 16
83010	20 x 20
83020	25 x 25
83030	32 x 32
83040	40 x 40
83050	50 x 50
83060	63 x 63
83070	75 x 75

Welding-Elbow 90° MT



Art.-No.:	Type
83005	16 x 1/2" MT
83015	20 x 1/2" MT
83017	20 x 3/4" MT

Welding-Elbow 90° FT



Art.-No.:	Type
83006	16 x 1/2" FT
83012	20 x 1/2" FT
83014	20 x 3/4" FT

Welding-Tee



Art.-No.:	Type
85000	16 x 16 x 16
85010	20 x 20 x 20
85020	25 x 25 x 25
85030	32 x 32 x 32
85040	40 x 40 x 40
85050	50 x 50 x 50
85060	63 x 63 x 63
85070	75 x 75 x 75

Welding-Tee, red.



Art.-No.:	Type
85012	20 x 16 x 20
85022	25 x 16 x 25
85021	25 x 20 x 25
85032	32 x 25 x 32

Welding-Tee FT



Art.-No.:	Type
85005	16 x 1/2" FT x 16
85015	20 x 1/2" FT x 20
85026	25 x 3/4" FT x 25
85037	32 x 1" FT x 32

Welding-Coupling



Art.-No.:	Type
87000	16 x 16
87010	20 x 20
87020	25 x 25
87030	32 x 32
87040	40 x 40
87050	50 x 50
87060	63 x 63
87070	75 x 75

Welding-Coupling, red.



Art.-No.:	Type
87041	40 x 32

Welding-Adapter, red.



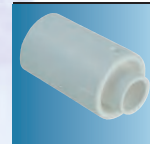
Art.-No.:	Type
86011	20 x 16
86021	25 x 20
86031	32 x 25
86042	40 x 25
86053	50 x 25
86052	50 x 32
86051	50 x 40
86064	63 x 25
86063	63 x 32
86062	63 x 40
86061	63 x 50
86072	75 x 50
86071	75 x 63

Welding-Tab connection elbow FT



Art.-No.:	Type
89000	16 x 1/2" FT
89010	20 x 1/2" FT

Welding-Endcap



Art.-No.:	Type
89500	16
89510	20
89520	25
89530	32