

...just safely installed

**multitubo**  
systems

**Established  
Press  
technology**

- **Stainless steel fittingbody:**  
high performance –  
low weight
- Connection-technology:  
**Simple and safe**
- An **economic installation**  
of large sizes
- **Less overhead work**  
by modular pre-mounting
- **Highest Flexibility**  
in each project
- **Fully compatible**  
within the system
- **Pressing on the workbench,**  
installing on site

**Stainless  
steel body  
Slim with a high  
performance**

**Simple  
connected  
with gripper  
clamps**

# MODULAR PRESS-FITTINGS 90 | 110



**More  
flexibility from  
16 mm up to  
110 mm**

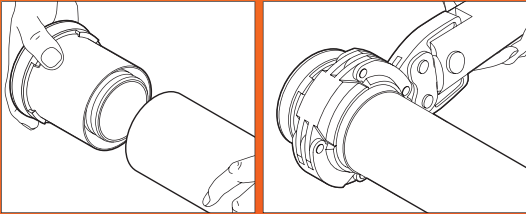


## FITTINGS RAPID AND FLEXIBLE ASSEMBLED!

With the modular system you are able to assemble more than 150 connections by using just 15 different parts.

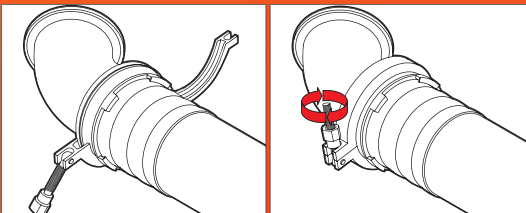
## PRESSING ON THE WORKBENCH, INSTALLING ON SITE

Convenient pressing on the work-bench.



### EASY ASSEMBLING BY GRIPPER CLAMPS

The connection on site can be easily done by using gripper clamps. A warrant for a permanent tight connection.



## YOUR ADVANTAGES:

### EASY HANDLING:

Weight savings up to 50% compared to metal pipe connections.

Lighter fittings resulting from thinner wall-thickness.

### HIGHER SAFETY AT WORK:

Lower material weights increase the safety at work in heights or working over-head.



### Press-Adapter

Art.-No.:	Type
M22075	75 x 7,50
M22090	90 x 8,50
M22110	110 x 10,00



### Base Body Elbow 90°

Art.-No.:	Type
M23000	90°



### Base Body Elbow 45°

Art.-No.:	Type
M23200	45°



### Base Body T-Piece

Art.-No.:	Type
M25000	



### Connector MT

Art.-No.:	Type
M20212	2 1/2" MT
M20300	3" MT



### Connector FT

Art.-No.:	Type
M21034	3/4" FT
M21200	2" FT
M21212	2 1/2" FT
M21300	3" FT



### Blind Cap

Art.-No.:	Type
M29500	



### Gripper Clamp with Sealing

Art.-No.:	Type
M28000	
M28010	replacement sealing